

FAST

Bristol CH

EXTRA LARGE 6



1823

Sally L.



GET THINKING

GET TOGETHER

GET INSPIRED



GET THINKING

We now invite you to delve a little deeper and explore how your experiences relate to climate change.

Sue's life-long connection to Bude, and her way of noticing the world around herself, means her story contains many links to important environmental issues. We heard a touching commitment to protecting the ocean from the harm of plastic, and a startling first-hand account of the changes to Bude's coastline. With so many local projects in Bude looking after our coast and sea, there are plenty of ways to get involved.

The good news is that our community has all the tools and knowledge we need to avert the worst effects of climate change, so all we need now is for everyone to act!



THIS SPACE FOR

OUR OCEANS

On a blue planet it is not surprising that our oceans are fundamental to all life on Earth. Responsible for regulating our climate and weather patterns, they also produce 50-80% of the oxygen we breathe...

...and have absorbed 90% of global warming since 1990 and a quarter of our carbon emissions. Despite their vastness, life in the oceans is a finely tuned balance, so it is imperative that we protect them from further harm to

ensure they continue to protect us.

Every day our actions on land impact our oceans. Whether it's our appetite for fish leading to exploitation of fish stocks, or pollutants from industry and sewage being washed out to sea, or our desire for convenience, filling our oceans and marine environment with plastic and microplastics.

For a long time, Bude has led the way in addressing these impacts, which

is no surprise when so many of us care deeply about our beautiful beaches and coast. Our community is full of people stepping-up to solve problems, resulting in initiatives like the 2-Minute Foundation, the Cleaner Seas Project, and a host of volunteer-led groups, such as Widemouth Taskforce, who all work tirelessly against the pollution of our beaches and waters.



CHANGING COASTLINE

As Sue has witnessed, our coastline is changing. Although it's always shifted, as the impacts of climate change accelerate, so do the risks associated with sea level rise.

SEA LEVEL RISE

As temperatures rise, ocean waters expand, adding to the rising sea levels caused by our reserves of ice-sheets and glaciers melting faster than ever. Day by day it leaves us more prone to flooding and coastal erosion, the impacts multiplied by storm surges and

increasingly extreme weather events.

STORM SURGE

This is an exceptional but increasingly frequent large rise in sea-level during an intense storm. A surging tide is created by a combination of storm size, wind intensity and direction, and a

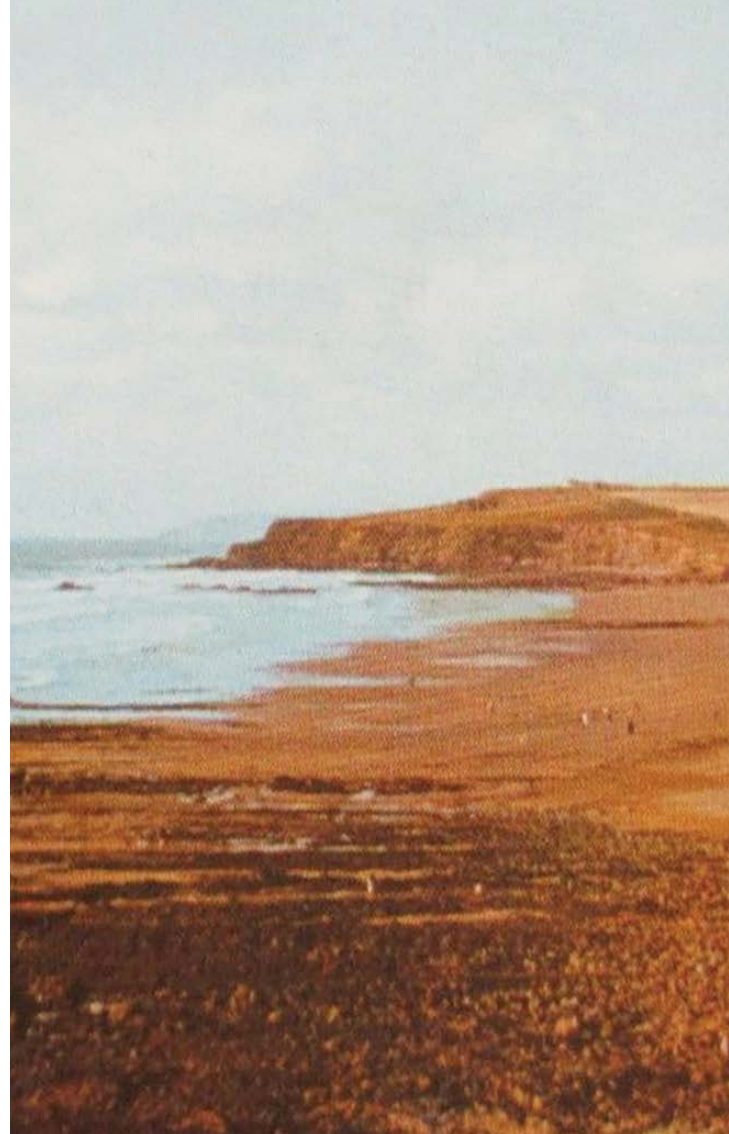
high tide. If a storm coincides with a particularly high tide, the sea-level can be up to 3m higher, with waves on top. In most winters in Bude we see surfers riding storm surges up the river through the town. But storm surges present a significant danger to life and property when they spill over flood defences.

We can all play our part in adapting to this risk, and minimising the damage caused by erosion and flooding. Reducing our contributions to

climate change will help reduce the risk of storm surges becoming a very serious threat.

Did you know?

Every inch of sea level rise results in the loss of about 2.5 meters (100 inches) of beach, though recent studies suggest beach losses around the globe could happen even faster.



GET TOGETHER

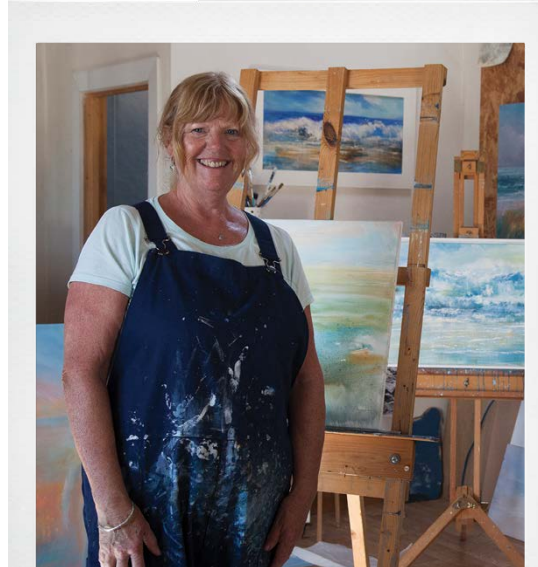
If you're part of a local group and would like to explore this theme more through additional activities, then you might like to use our 'Hands On' toolkits. Contact the Bude Climate Partnership to find out more.

Teachers wanting to use these stories in the classroom can download additional resources for Vicko's Story, Lochy's Story, Simon's Story, Hilary's Story, Jan's Story and Alex's Story, via the 'Local Voices' pages on the Bude Climate Partnership website.



GET INSPIRED

We have put together some tips on what we as individuals and collectively as a community can do to have the greatest positive impact.



These changes will not only improve the quality of life for everyone in our area, but also reduce contributions to worsening climate change.

Flooding is an important issue for our community, so we have covered

it in depth in Simon's Story. The following tips are what we can do to protect our oceans and coastline.

CUT DOWN ON EATING FISH

Fish stocks all over the world are exploited to the point of collapse as competitive markets promote unsustainable fishing methods. By eating less fish, we can send a message to producers and allow fish stocks to regenerate. If you want to eat fish, why not try a less commonly eaten variety – these are often just as tasty, and more sustainable. It's best to buy local fish that has been sustainably sourced





– ideally landed by one of our small Cornish fishing boats, and line caught. The Sustainable Food Trust has a good guide.

LOOK OUT FOR WILDLIFE

We are lucky in Bude to have a diverse range of wildlife that help

keep our environment healthy, but it needs our help. So, tread lightly on the land and seashore, keep your eyes peeled and give animals space. For instance, seals on beaches and land can seriously injure themselves if disturbed by humans. If you spot

beached seals, please do not approach them and keep noise to a minimum.

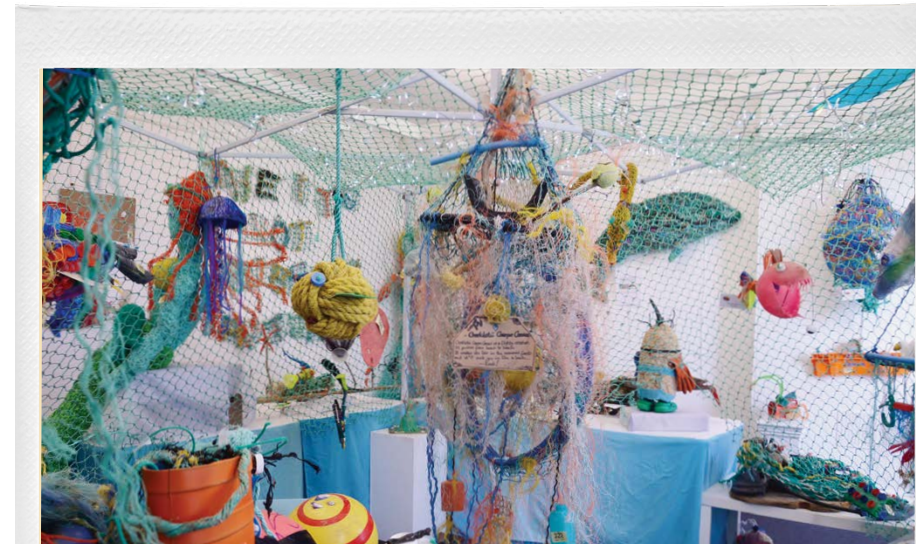
REPORT WILDLIFE SIGHTINGS

If we know what's out there, then it's easier to protect it. A number of charities, organisations

and projects encourage people to submit wildlife sightings. Your valuable information will help improve our understanding of local natural history, as well as being used in decision-making, education, research and other public-benefit purposes.

DO NOT USE HARMFUL CHEMICALS

Especially in the garden, pesticides, domestic cleaning products and artificial fertilisers harm your soil and run off into our waterways. You can find natural and organic products for the home



or you can make your own that are better for you, the air, rivers and the sea (and they do the job just as well!)

CALLING ANY GOLFERS

Bude's much-loved golf course is situated very near the coast and has many waterways in and around it. Organic, nature-friendly and climate-smart ways to manage turf that won't poison our waters now exist. Could this be the time to start a conversation with your club? The superb golf course on Martha's Vineyard island is a great example of how this can be achieved.

CHANGE HOW YOU GET ABOUT

Did you know that as you drive, harmful pollutants wash off your car into our drains and out to sea? If possible, try replacing a car journey with walking, cycling or public transport.

RESPECT SAND DUNES AND FRAGILE CLIFFS

Nature has a clever and wonderful way of holding crumbly things together, namely with plant roots. But our clumsy footing can kill plants and compromise nature's defence, so be mindful of where you choose to walk.

SPEND TIME IN NATURE

Take time to get to know the beautiful places and creatures that share our home and encourage others to do the same. The more connected we are to nature, the more inspired we are to protect it.

PROTECT YOUR COASTLINE

There are many initiatives in and around Bude working to reduce the risk of flooding and erosion – such as rewilding by Westcountry Rivers Trust. Quite soon, our community will need to make decisions about what protection looks like in Bude. Stay tuned in and get involved.





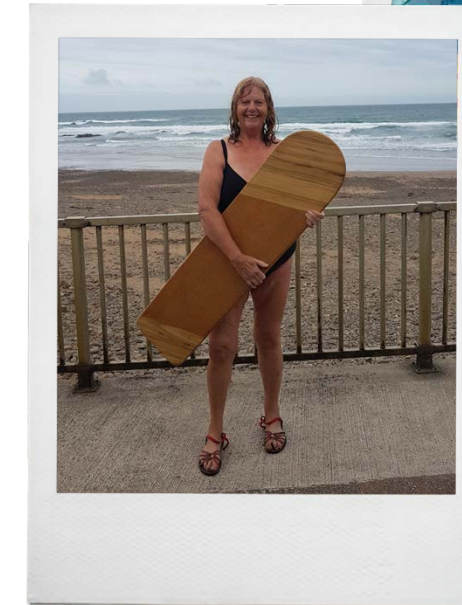
PICK UP PLASTIC

Whether you're on the beach or inland, picking up plastic, large or small, helps towards cleaning up the huge volume of plastic waste that litters our shared world today. If you can recycle it then please do, and make sure anything else is disposed of properly. We don't want it making its way back into the ocean!

REPAIR, RE-USE AND RECYCLE

The first step towards reducing waste is to think about and cut down on what you buy.

If you can't re-use or repair something, then make sure you recycle it. We've got a whole section on this in Michael and John's Story.





GET INVOLVED

Bude is already bursting at the seams with enthusiastic environmental groups and great community initiatives if you want to get involved. These are the future of our communities and our

economy. Here's a few relevant to the theme of Sue's story.

2 MINUTE FOUNDATION

Help reduce plastic waste in the marine environment with a two-minute beach clean.
www.beachclean.net

FRIENDS OF BUDE SEA POOL

Join the group of volunteers that keep the Sea Pool open.
www.budeseapool.org

WIDEMOUTH TASK FORCE

A group that gathers to litter-pick and rescues marine life on beaches between Widemouth and Millook.
www.facebook.com/groups/113788675375882

CLEANER SEAS PROJECT

A long-standing community project that cleans up pollution in our seas. Bude Cleaner Seas Project works with the

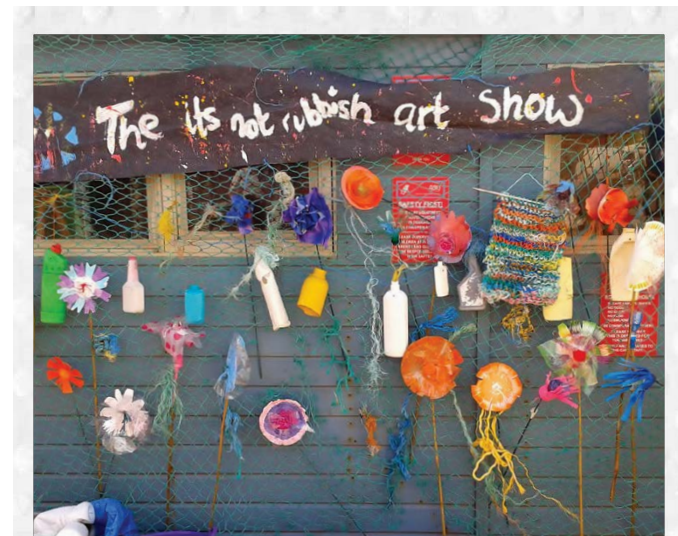
local community to give Bude the cleanest water quality and the cleanest beaches in Cornwall.
www.cleanerseasproject.co.uk

TRANSITION BUDE

Working to make Bude sustainable with local solutions to global problems
www.transitionbude.org

BUDE COASTAL COMMUNITIES TEAM

If you have a project, idea or group that needs funding, BCCT can help you find it. It works to maximise economic, social and environmental benefits for the local



area via community partnership and collaboration.
www.budecoastalteam.org.uk

BUDE MARINE GROUP

Interested in marine life in the Bude area? Bude Marine Group can help you understand the marine environment and the influences on it, so that we can protect and enhance it for the benefit of all.

budemarinegroup.weebly.com

WESTCOUNTRY RIVERS TRUST

Join Westcountry CSI (which stands for Citizen Science Investigations team) and contribute to the resilience of our region's rivers, their habitats and wildlife for now and for future generations.

wrt.org.uk/project/become-a-citizen-scientist/

IF YOU WANT TO HELP RECORD WILDLIFE SIGHTINGS

There are numerous groups, including the Environmental Records Centre for Cornwall and the Isles of Scilly (ERCCIS) the Cornwall Wildlife Trust, the Sea Watch Foundation, the Cornwall Marine and Coastal Code Group and the National Biodiversity Network (NBN).



DIVE DEEPER

Below are some useful links to help you dive deeper into the science we've introduced in the 'Get Thinking' section.

THE UK COMMITTEE ON CLIMATE CHANGE OVERVIEW OF HOW CLIMATE CHANGE WILL AFFECT OUR COAST:

www.theccc.org.uk/wp-content/uploads/2018/10/Managing-the-coast-in-a-changing-climate-October-2018.pdf

THE NATIONAL TRUST IS RESPONDING TO COASTAL EROSION IN A RANGE OF CONSIDERED AND POSITIVE WAYS. HERE'S WHAT IT'S UP TO:

www.nationaltrust.org.uk/features/living-with-change-our-shifting-shores#



THE ROYAL SOCIETY ON HOW FAST SEA-LEVEL IS RISING AND WHY:

www.royalsociety.org/topics-policy/projects/climate-change-evidence-causes/question-14

FOR MORE ON COASTAL EROSION LOOK AT:

www.climatechangepost.com/united-kingdom/coastal-erosion/

THE UN HAS A GOOD EXPLANATION OF WHAT OUR OCEANS DO FOR US AND HOW CLIMATE CHANGE IS AFFECTING THEM:

www.iucn.org/resources/issues-briefs/ocean-and-climate-change

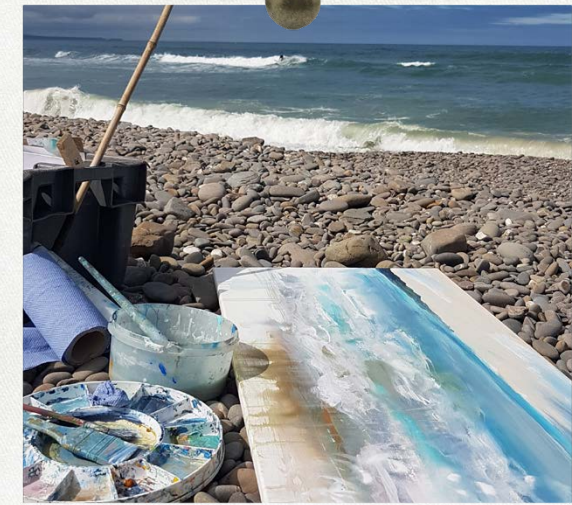


AND FOR MORE ABOUT THE POLLUTION OF OUR OCEANS THIS SITE OFFERS A GOOD OVERVIEW:

www.thecommonwealth.org/marine-pollution

ON THE VITAL IMPORTANCE OF PROTECTING OUR OCEANS:

www.greenpeace.org/international/act/protect-the-oceans/



THANK YOU.

We hope our suggestions and advice leave you feeling inspired. Climate change can be challenging to think and talk about, so if any of your questions haven't been answered or you need support or you have an idea you want to pursue, then please get in touch with the Bude Climate Partnership. We're here to help you.

Email info@budeclimate.org

SUPPORTED BY:



This toolkit has been developed by Storylines, a Community Interest Company who use the common language of story to bring people together to share, celebrate, learn and connect.

For more visit www.storylines.org.uk. Designed by Georgia Byron.